

Accessories for planks

All metal parts are stainless steel AISI 316



HD-Clip

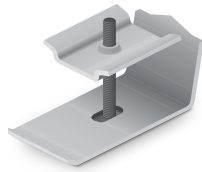
Product number: 149100

HD clip used for the subassembly of our HD planks.

Comes with M8x50 bolt (ISO 4014) and washer for assembly.

All parts are made of acid-resistant stainless steel (1.4404 / AISI 316L)

This item is sold as 20 pcs. in a pre-packed box.



HD-Clamp 10-30 mm

Product number: 149101

HD Clamp ensures easy assembly and removal of planks without the need for special tools. The bracket is used for subassembly. 10-30 mm flange

Comes with M8x50 bolt (ISO 4014) and wedge lock washer.

All parts are made of acid-resistant stainless steel (1.4404 / AISI 316L)

This item is sold as 20 pcs. in a pre-packed box.



Base Plate Washer

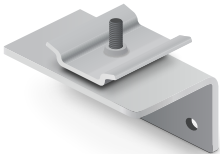
Product number: 149105

The bracket is used for the top mounting of Fiberline planks MD and HD. The washer measures $\varnothing 30$ and fits $\varnothing 21.5$ hole.

Comes with M8x60 bolt (ISO 4014) and washer (ISO 7093)

All parts are made of acid-resistant stainless steel (1.4404 / AISI 316L)

This item is sold as 20 pcs. in a pre-packed box.



HD Angle

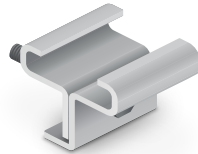
Product number: 149103

This bracket is used for the subassembly of Fiberline HD planks on wooden beams, as an example.

Comes with M8x30 bolt (ISO 4017) and washer (ISO 7089)

All parts are made of acid-resistant stainless steel (1.4404 / AISI 316L)

This item is sold as 20 pcs. in a pre-packed box.



Coupling Clip

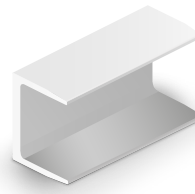
Product number: 149104

The bracket is used for the assembly of flanges on Fiberline planks HD and MD. The brackets allow for tightening.

Comes with Allen screw.

All parts are made of acid-resistant stainless steel (1.4404 / AISI 316L)

This item is sold as 10 pcs. in a pre-packed box.



EDGE U-PROFILE U

Product number: 090145

The U-profile is used for the edge finishing of MD and HD planks in order to give a nice finish to the solution. The U-profile is made of fiberglass that is corrosion-free and therefore has minimal maintenance requirements even under demanding conditions. It provides a long life to the solution in fiberglass even under demanding conditions.



MD Plank

Single span with line load			
	Load capacity per meter width at L/200 [kN/m ²]	Load capacity per meter width at L/300 [kN/m ²]	Load bearing capacity per meter width [kN/m ²]
Span L [m]	z-axis	z-axis	z-axis
0,50	81,80	54,54	199,82
1,00	11,69	7,79	57,59
1,50	3,56	2,37	25,60
2,00	1,52	1,01	14,40
2,50	0,78	0,52	9,22
3,00	0,45	0,30	6,40
3,50	0,29	0,19	4,70
4,00	0,19	0,13	3,60
4,50	0,13	0,09	2,84
5,00	0,10	0,07	2,30

* Load-bearing capacity governed

Two spans with line load			
	Load capacity per meter width at L/200 [kN/m ²]	Load capacity per meter width at L/300 [kN/m ²]	Load bearing capacity per meter width [kN/m ²]
Span L [m]	z-axis	z-axis	z-axis
0,50	159,21	106,14	159,85
1,00	26,32	17,55	57,59
1,50	8,29	5,53	25,60
2,00	3,58	2,39	14,40
2,50	1,85	1,23	9,22
3,00	1,08	0,72	6,40
3,50	0,68	0,45	4,70
4,00	0,46	0,30	3,60
4,50	0,32	0,21	2,84
5,00	0,23	0,16	2,30

* Load-bearing capacity governed

Three spans with line load			
	Load capacity per meter width at L/200 [kN/m ²]	Load capacity per meter width at L/300 [kN/m ²]	Load bearing capacity per meter width [kN/m ²]
Span L [m]	z-axis	z-axis	z-axis
0,50	134,72	89,82	166,51
1,00	21,22	14,15	71,99
1,50	6,61	4,40	32,00
2,00	2,84	1,89	18,00
2,50	1,46	0,98	11,52
3,00	0,85	0,57	8,00
3,50	0,54	0,36	5,88
4,00	0,36	0,24	4,50
4,50	0,25	0,17	3,56
5,00	0,19	0,12	2,88

* Load-bearing capacity governed

Single span with point load			
	Load capacity per meter width at L/200 [kN]	Load capacity per meter width at L/300 [kN]	Load bearing capacity per meter width [kN]
Span L [m]	z-axis	z-axis	z-axis
0,50	54,54	36,36	57,59
1,00	7,44	4,96	28,80
1,50	2,24	1,49	19,20
2,00	0,95	0,63	14,40
2,50	0,49	0,33	11,52
3,00	0,28	0,19	9,60
3,50	0,18	0,12	8,23
4,00	0,12	0,08	7,20
4,50	0,08	0,06	6,40
5,00	0,06	0,04	5,76

* Load-bearing capacity governed

Two spans with point load			
	Load capacity per meter width at L/200 [kN]	Load capacity per meter width at L/300 [kN]	Load bearing capacity per meter width [kN]
Span L [m]	z-axis	z-axis	z-axis
0,50	70,93*	48,41	70,93
1,00	10,21	6,81	35,46
1,50	3,10	2,07	23,64
2,00	1,32	0,88	17,73
2,50	0,68	0,45	14,19
3,00	0,39	0,26	11,82
3,50	0,25	0,17	10,13
4,00	0,17	0,11	8,87
4,50	0,12	0,08	7,88
5,00	0,09	0,06	7,09

* Load-bearing capacity governed

Three spans with point load			
	Load capacity per meter width at L/200 [kN]	Load capacity per meter width at L/300 [kN]	Load bearing capacity per meter width [kN]
Span L [m]	z-axis	z-axis	z-axis
0,50	71,99*	49,58	71,99
1,00	10,49	6,99	36,00
1,50	3,18	2,12	24,00
2,00	1,35	0,90	18,00
2,50	0,70	0,46	14,40
3,00	0,40	0,27	12,00
3,50	0,25	0,17	10,28
4,00	0,17	0,11	9,00
4,50	0,12	0,08	8,00
5,00	0,09	0,06	7,20

* Load-bearing capacity governed